

# MHT

INDUSTIRAL MATERAL  
SUPPLY EQUIPMENT

## PIPE -

Carbon Steel & Stainless Steel

## FITTING -

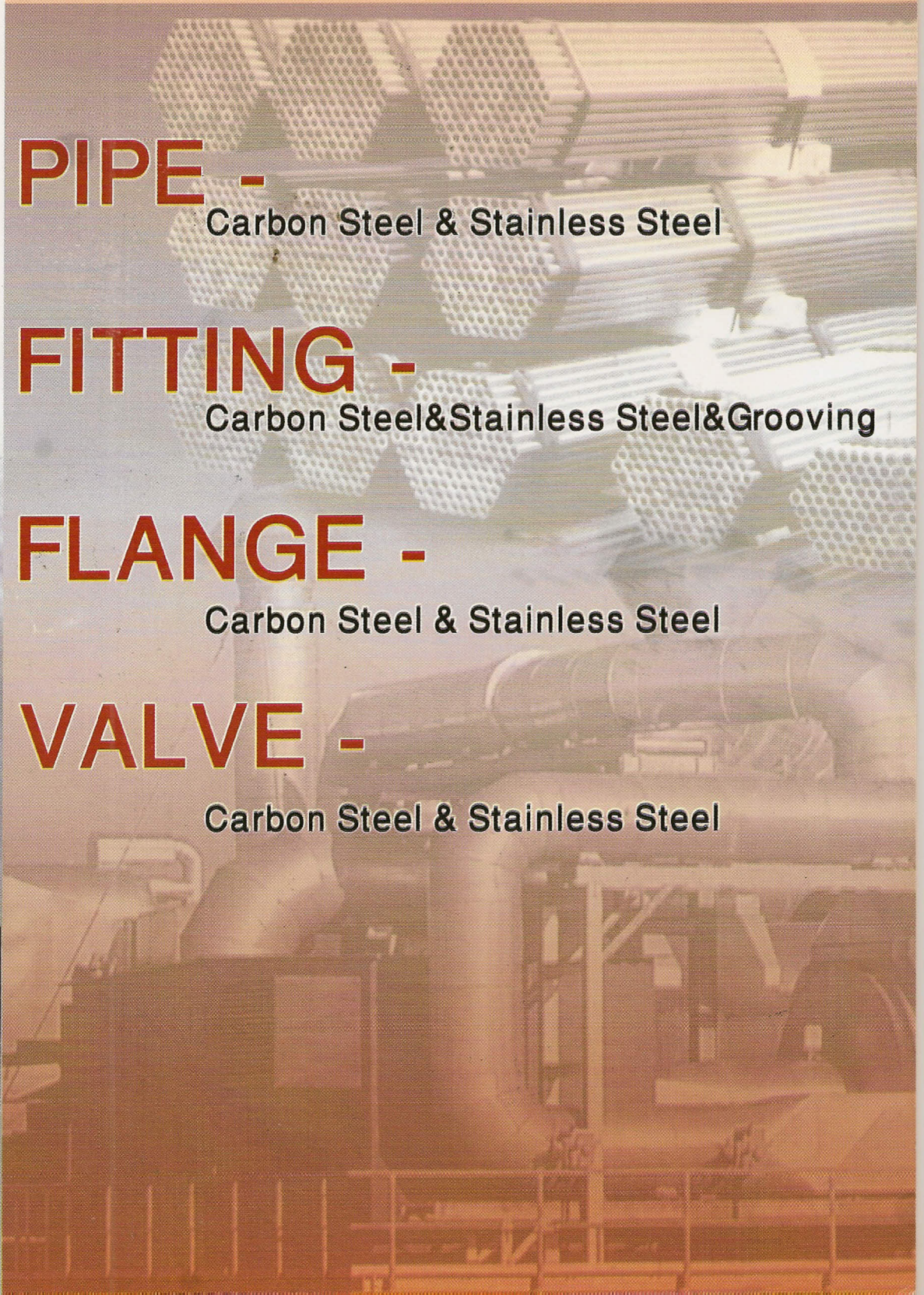
Carbon Steel&Stainless Steel&Grooving

## FLANGE -

Carbon Steel & Stainless Steel

## VALVE -

Carbon Steel & Stainless Steel

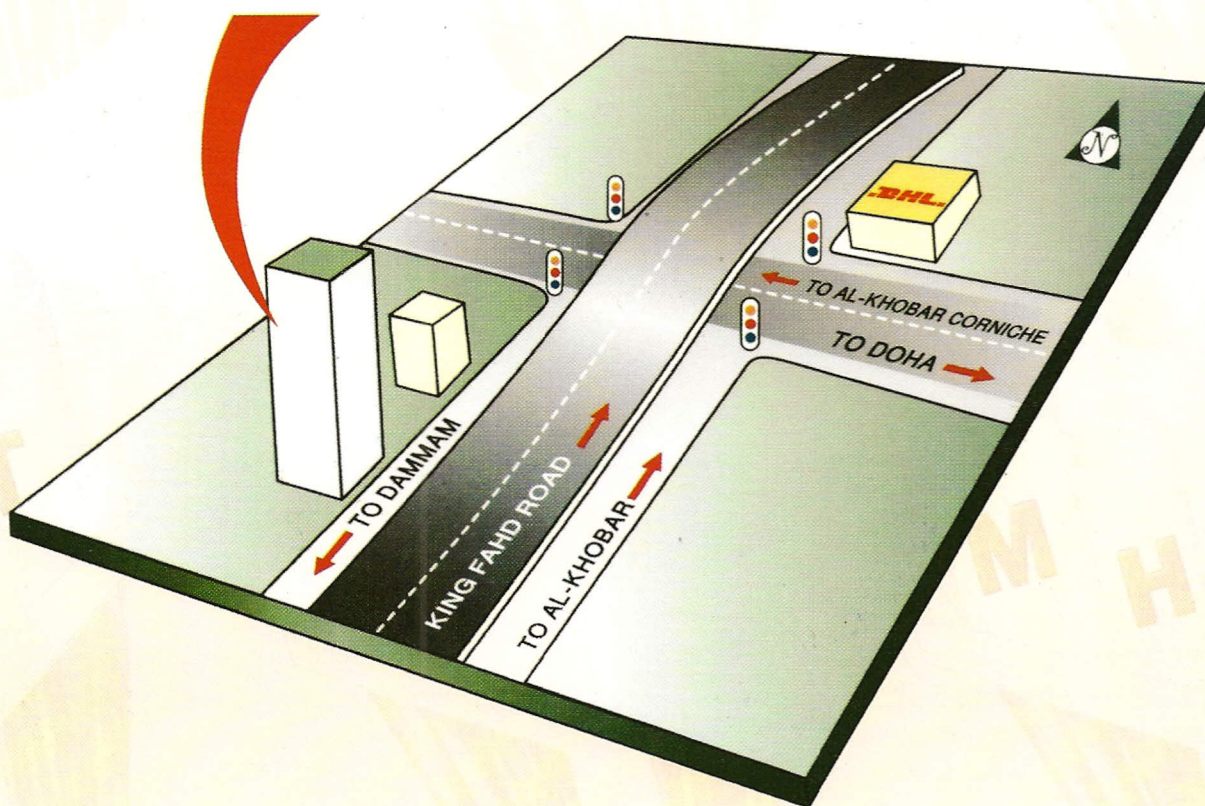


## Our principles:

- 1- We value professionalism and technical mastery
- 2- Order placement process clear and easy
- 3- Dedicated after sales follow up
- 4- Response to request for quotation within 3 hours
- 5- Computerized transport scheduling systems
- 6- We are disciplined in generating the highest productivity

# MHHT

Al-Saeed Tower  
4 th Floor Room 403



By maintaining all our acquired materials supremely inspected by our trained quality control staff, we are confident that all our deliveries will meet the expectations of our client.

## PIPES & TUBES

### Carbon Steel Pipes High Temperature or Low (Seamless & Welded)

Standard : ASTM A53 GR.B, A106 GR.B

API 5LX GRB API 5LX

F6 / F9 / F11 / F22

Schedule : 20, 30, 40, 60, 80, 120, 160, XXH & STD.

Finish : Black & Galvanized

Size : 1/4" up to 60" dia

### Welded (ERW) Pipes ASTM A120 A53

#### GR. A/B SCH. 20 & 40

Sizes : 1/2" up to 40"

### Welded (ERW) Pipes ASTM A312 Stainless Steel

Standard : ASTM A312

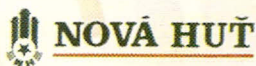
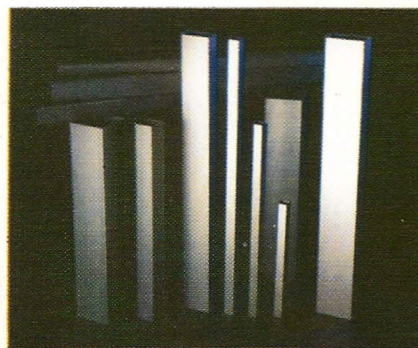
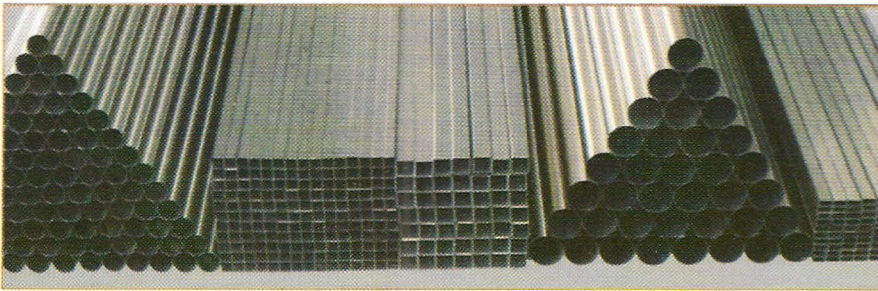
Type : 304, 304L, 316, 316L

Schedule : 10, 20, 30, 40, 80, 120, 160 & XXH

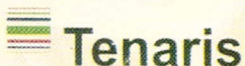
Thickness : .035", .049", .065", .083"

(Tubes) : 1mm, 1.5mm, 2mm, 3mm

Sizes : 1/4" up to 16"



Nippon Steel Corporation



# FITTINGS

**Carbon Steel & Galvanized Butt-weld Fittings**  
ACC. To ASTM A234 WPB, ANSI B16.9, ASTM  
A420-WPL3 & ASTM A420-WPL6

Schedule : 10, 20, 40, 60, 80, 120, 160 & XXH

Sizes : 1/2" up to 60"

**Forged Fittings, Screwed & Socket Weld,**  
ACC To ASTM A350-LF2 & ASTM,

A350-LF3 & A105.

Class : #150, #2000, #3000, #6000

Sizes : 1/8" up to 4"

Also available in ASTM A181, ASTM A106

**Stainless Steel Butt-Weld Fittings ACC.**  
To ASTM A403 ANSI B16.9

Type : 304, 304L, 316, 316L

Schedule : 10, 20, 40, 80, 120, XXH

Sizes : 1/8" up to 24"

**Forged Stainless Steel Fittings ACC.**  
To ASTM A182

Type : 304, 304L, 316, 316L

Class (Pressure Rating) : #2000, #3000, #6000

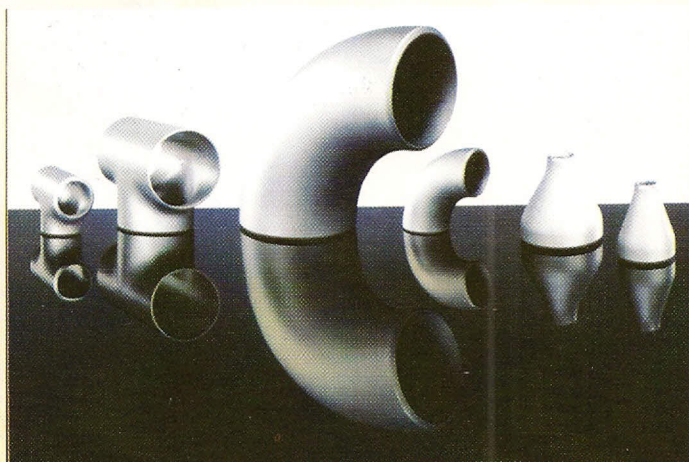
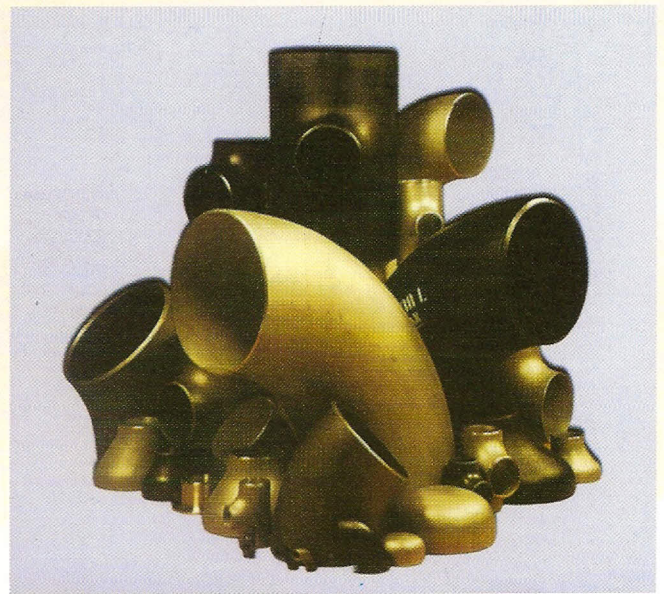
Available in screwed and Socket Weld

**Malleable Iron Fittings Black/Galvanized**

Class : 150#, 300# (Hitachi)

**Compression Fittings SS316, Brass, Monel,**  
**Cast Alloy, SS20 & Many other Alloys**

Pressure Rating : 3000 PSI for Brass and 5000  
PSI for SS316



**ETS DELCORTE**

**T TECTUBI**

**M.E.G.A.**



**SCHULZ**

**Parker**  
Fluid Connectors

**ernefittings**

**BENKAN**

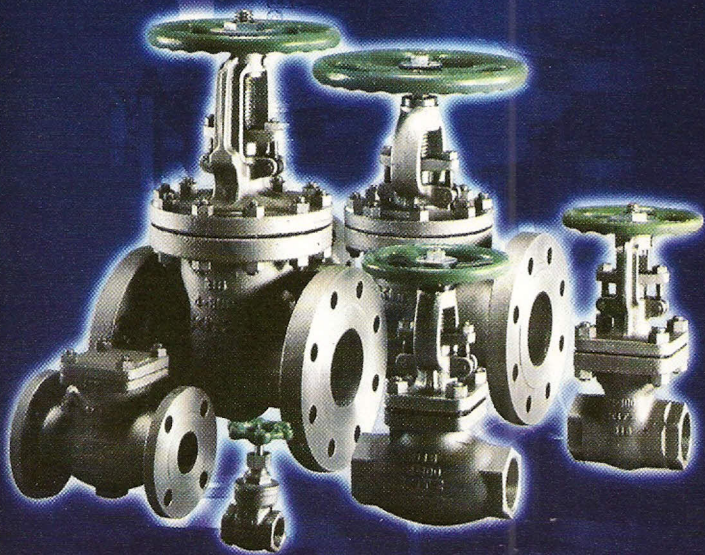
**Deltinox**

**RING BRAND**

**tecnoforge**  
BUTT WELDING FITTINGS S.P.A.



the  
**SWAGELOK**  
companies



## VALVES

**Cast Steel / Stainless Steel / Cast Iron : Gate, Globe, Check, Foot Valves / Ball Valves**

Class : #125, #150, #300, #600, #1500

Size : 2" up to 30"

**Forged Stainless Steel and Carbon Steel Valves : Gate, Globe, Check, Ball Needle, Pressure Relief and Reducing Valves.**

Class : #800, #1500, #3000 & #5000

Size : 1/2" up to 2"

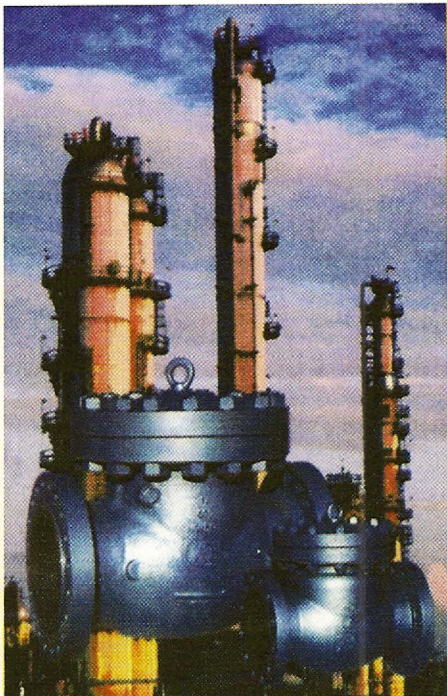
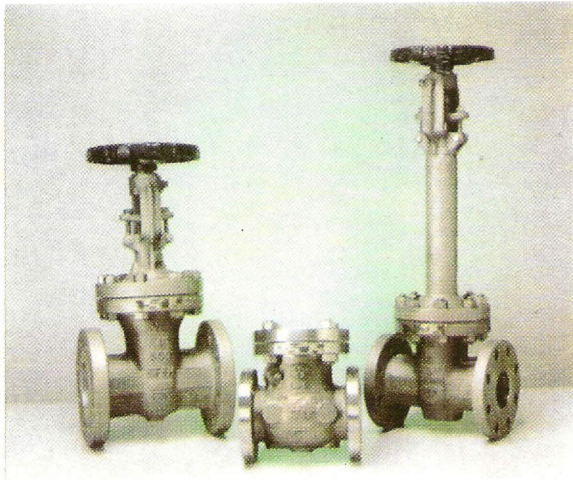
**Butterfly Valves : Brass & Bronze Valves / Stainless Steel**

Ball, Needle Valves available also in SS316,

Brass & Steel, Pressure Reducing Valves /

Air Relief Valves /

All Type of Strainers



**KITZ**  
KITZ CORPORATION

**PCC EuroValve**

**SF** Sure flow  
Equipment Inc.

**OMB**

**AIL**  
VALVES

**ROMASTER**

**LVF**

**MUELLER STEAM  
SPECIALTY**

**MW**®  
**NEWAY**

## FLANGES & GASKETS

### **Steel Flanges:**

**Weld Neck, Slip-on Blind, Socket and Screwed.**

Pressure Rating : #150, #300, #600, #900, #1500,, #2500,  
# 3000

Standard : ASTM A105 / A350, LF2 / ASA /  
ANSI / BS / DIN

Size : 1/2" up to 6"

### **Stainless Steel Flanges :**

**Weld Neck, Blind, Slip-on, Socket-Weld and Screwed.**

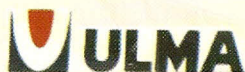
Type : 304, 304L, 316, 316L

Size : 1/2" up to 24"

Pressure Rating : #150, #300, #600, #900,  
#1500, #3000.

### **Gaskets :**

**Asbestos, Neoprene Rubber Gaskets Spiral Wound Gasket (Asbestos, Fillers, Teflon Fillers), Carbon Steel or Stainless Steel Ring Gaskets.**



# Grooving Item :

## FLEXIBLE COUPLING

Model: FXC01



## RIGID COUPLING

Model: RGC01

## MECHANICAL OUTLET TEE (THREADED)

Model: MTE01

## MECHANICAL OUTLET CROSS (THREADED)

Model: MCR01



## MECHANICAL OUTLET TEE (GROOVED)

Model: MTE02

## MECHANICAL OUTLET CROSS (GROOVED)

Model: MCR02

## GROOVED FLANGE

Model: FLA01

## FLANGE ADAPTER

Model: FLA02

## CAP

Model: CAP01



## ELBOW

Model: ELB01 / ELB02

45° Elbow

90° Elbow

## TEE & CROSS

Model: TEE01 / CRS01

Equal Tee, Grooved Ends

Equal Cross, Grooved Ends



## CONCENTRIC REDUCER

Model: RDC01 / RDC02 / RDC03

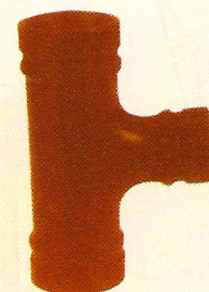
Grooved x Grooved

Grooved x Threaded

Grooved x Threaded

## REDUCING TEE

Model: RTE01



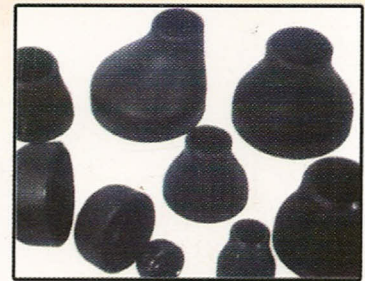
## GASKET TECHNICAL DATA

## MHT PRODUCTS

- Seamless and Welded Pipe Carbon steel and Stainless Steel SCH-40.80.160



- Fitting Carbon Steel and Strianless Steel  
But Weld & Forged Carbon Steel  
&Melable Iron & Grooving  
Fitting For Fire Fighting



- Flanges Carbon Steel and Stianless Steel  
Type Weld Neck & Slip On  
Threded & Sockt Weld  
CL-150.300.600.1500



- Valve Carbon Steel and Stianless Steel  
And bronz . Type for Valve Gate  
& Globe & Check & Ball & Strainer



**MHT** INDUSTRIAL MATERIAL  
SUPPLY EQUIPMENT

office : Khobar-Al- Saeed Tower 4 th Floor Room 403

Tel : 03-8146930

Fax : 03-8146931

Mobil : 0504825171

Dubai Office : +971 (04) 8832553 Fax : +971 (04) 8832586

Jabal Ali Free Zone